



> Mieterstrom

> Kommunalstrom

> Gewerbestrom



Mehr
Energie
gemeinsam

- More than 180 members, mostly northern Germany
- Equity Capital: more than 700.000 €
- BEN Members are ambassadors



BEN members at the Convent of energy cooperatives in Berlin, April 2024

BEN BürgerEnergie Nord eG



Project partner in their first tenant electricity project in Kiel



Founding members 2019

More energy together

“ *BEN is an innovativ energy cooperative. We aim for implementing the future energy system today*

Our members want to support:

- joint engagement in climate protection
- decentralised energy transition
- regional value creation
- building capacities among different stakeholders
- democratic structures in the energy system
- affordable, clean energy
- sustainable investments

› In Germany, we have more than 900 energy cooperatives. About 220.000 citizens have investested more than 1,84 billion euro in the energy transition.

BEN Membership

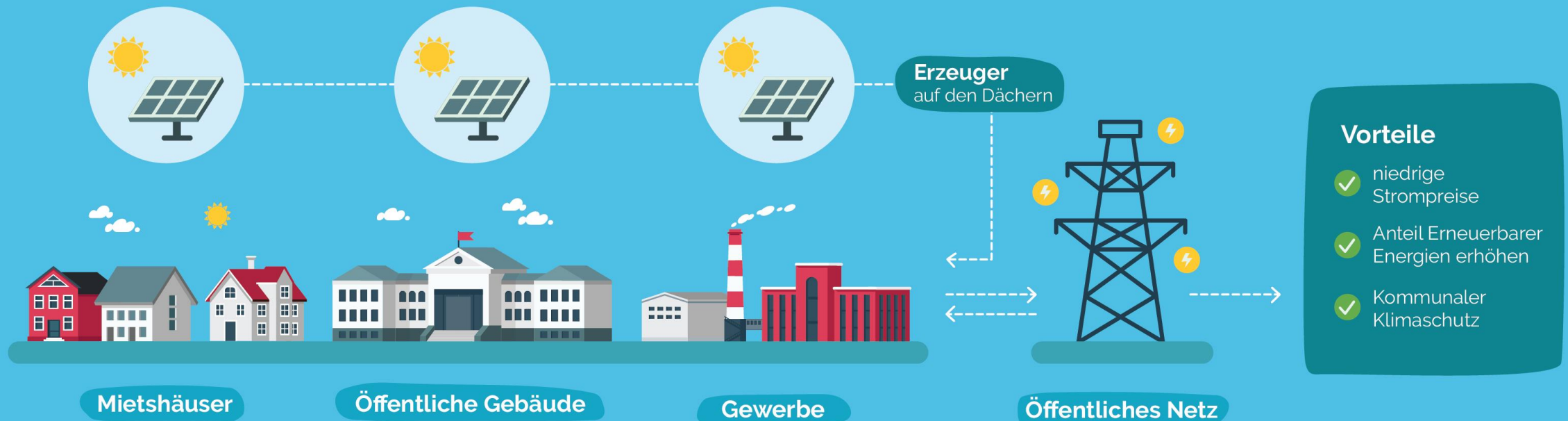


1 share = € 250



Was macht die BEN ?

Wir verkaufen PV-Strom vom eigenen Dach an Mieter (Mieterstrom), Gewerbetreibende (Gewerbestrom) und Kommunen (Kommunalstrom), speisen den Rest ins öffentliche Stromnetz ein, bzw. beziehen Reststrom aus dem öffentlichen Netz. Dies führt zu niedrigen Strompreisen für unsere Kunden, erhöht den Anteil Erneuerbarer Energien und bringt damit den Klimaschutz vor Ort voran.



OUR SERVICES

Project development

Investor /
Co-Investor

Operator

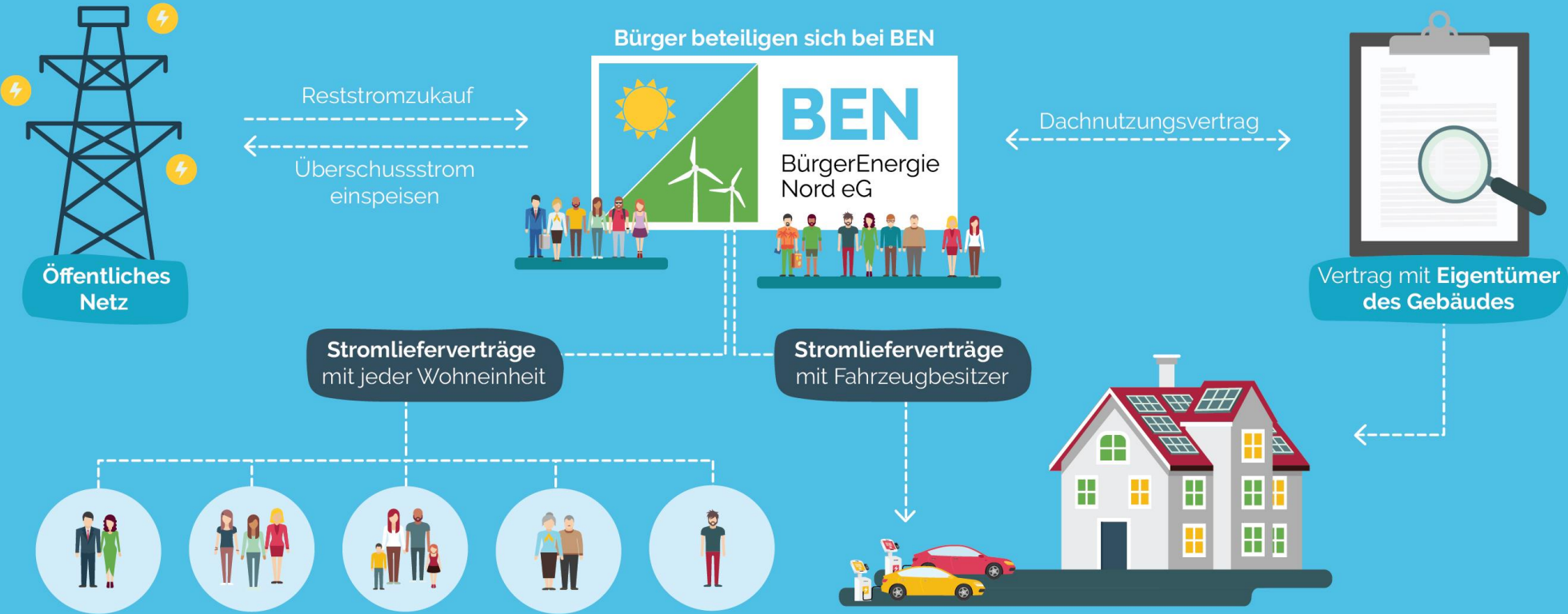
Energy supplier

Participation is the basis
of our services and
products.



Everyone has the opportunity to buy shares of the cooperative (as of 250€) and hereby become a co-owner of the pv installation.

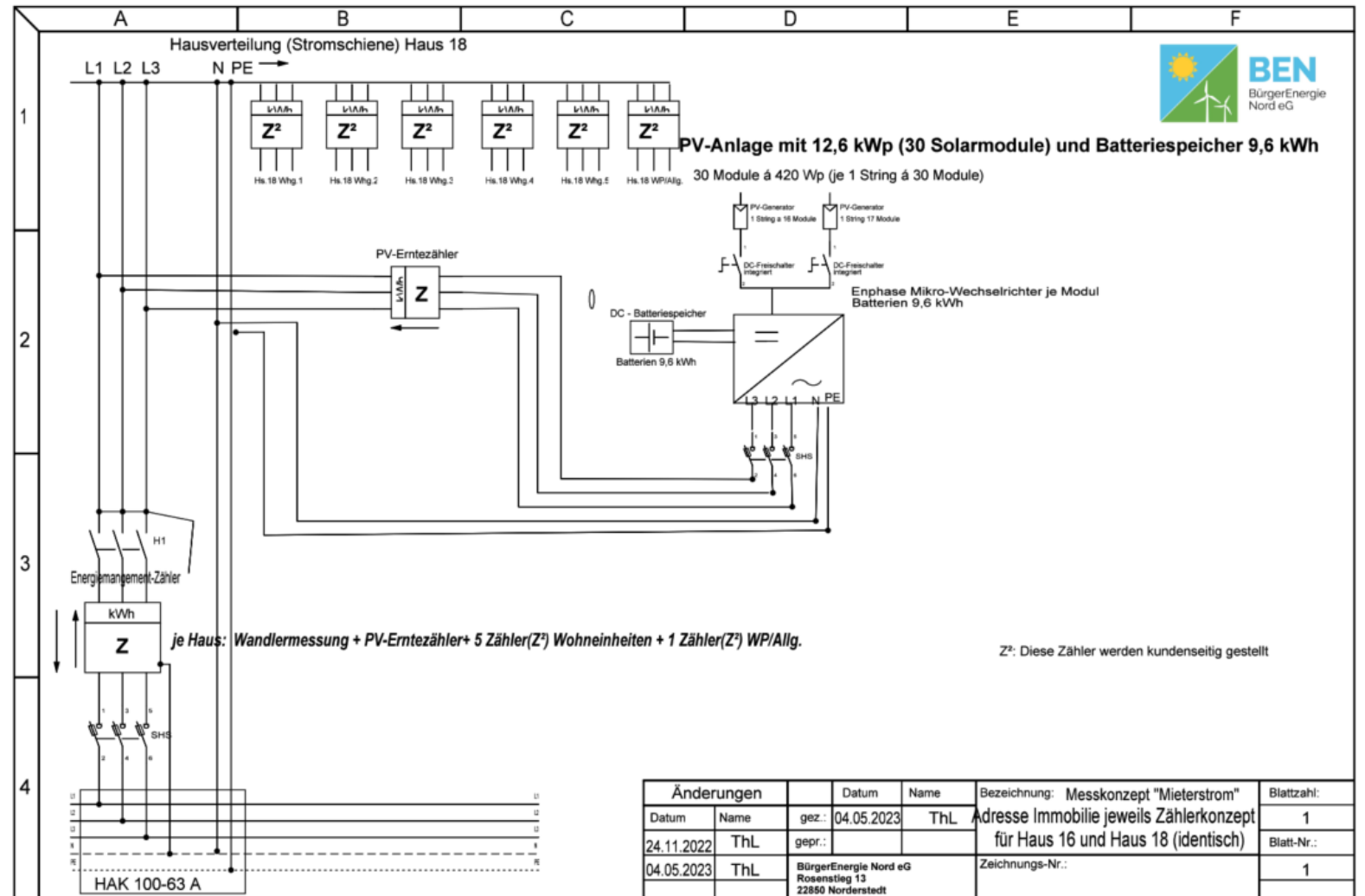
Vertragsbeziehung bei Mieterstrom



WHO GETS THE ELECTRICITY?

The solar electricity is shared among all consumers in the time of production.

If you consume while solar electricity is available, you can reduce your electricity bill accordingly.



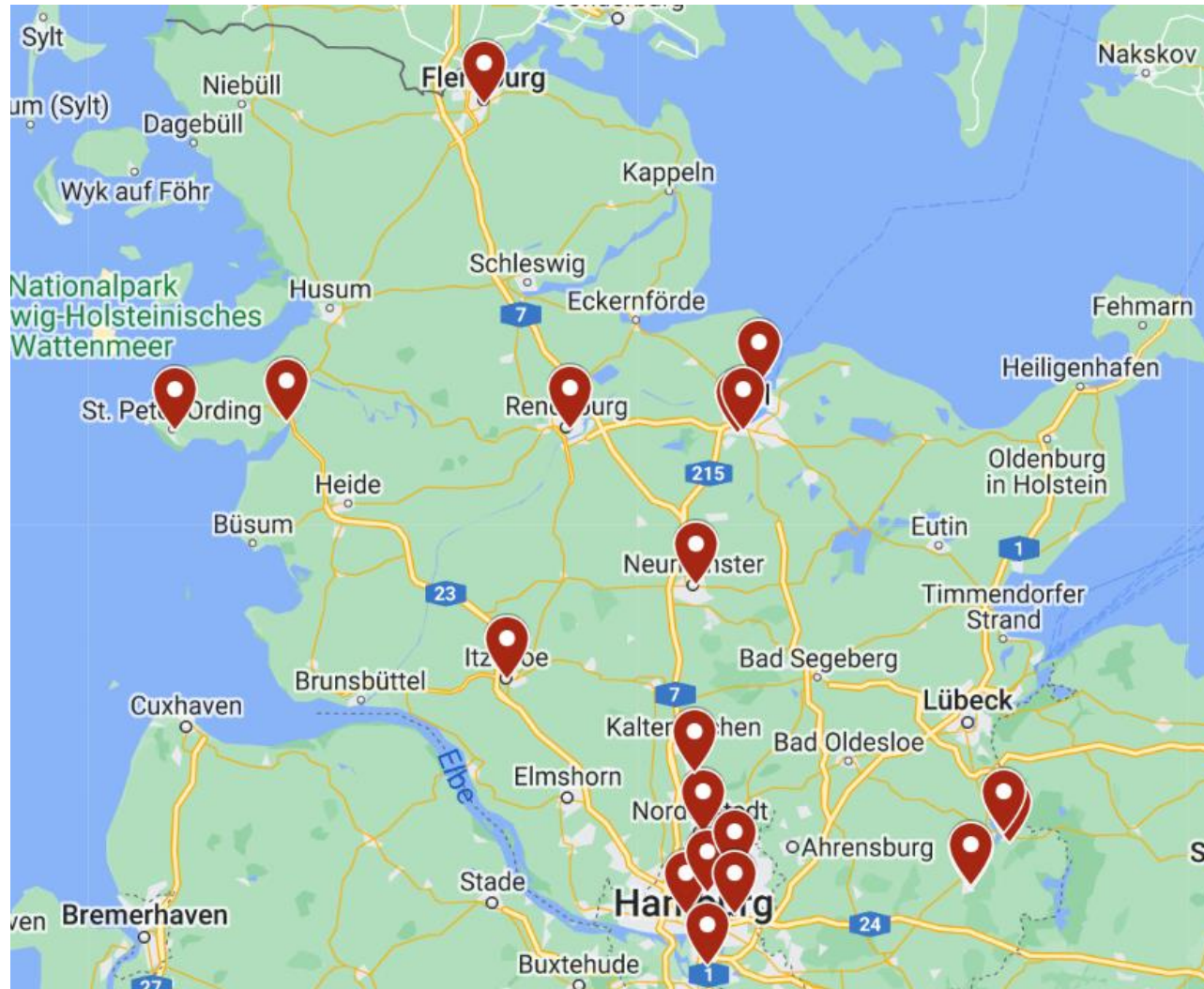
SAVING WITH TENANT ELECTRICITY

(1.500 kWh annual consumption, prices from June 2024)

Vattenfall	SW Norderstedt TuWatt (Ökostrom)	SW Norderstedt FairWatt (KEIN Ökostrom)	BEN Mieterstrom (bei 50% Solarstrom)
Strompreis: 32,9 Ct/ kWh Grundgebühr: 12.90€/ Monat	Strompreis: 42,90 Ct/ kWh Grundgebühr: 7.30€/ Monat	Strompreis: 44,20 Ct/ kWh Grundgebühr: 7.08€/ Monat	Strompreis: 28 Ct/ kWh Solarstrom 33,5 Ct/ kWh Netzstrom Grundgebühr: 10.50€/ Monat
Jahresrechnung: 648,30 €	Jahresrechnung: 730,74 €	Jahresrechnung: € 747,52, 74	Jahresrechnung: 587, 25 €

→ The more solar electricity you consume, the more you save.

BEN-PROJECTS ACROSS NORTHER GERMAN



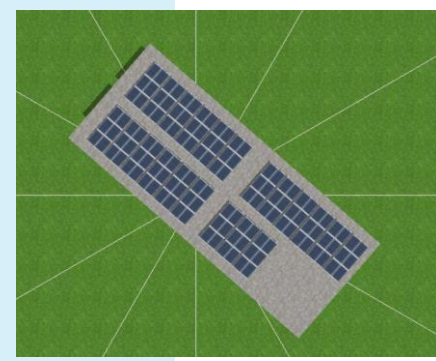
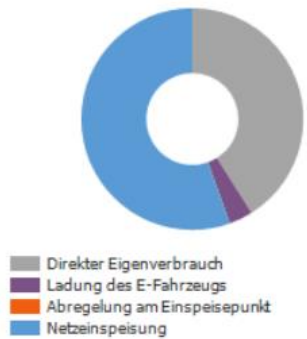
BEN has realised about 450 kWp of pv-installations

Another 1,5 MW is in development

Project City of Hamburg



PV-Generatorenergie (AC-Netz)



Supply for 3 consumers (meters)

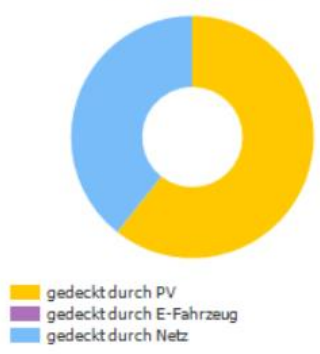
Size of PV Installation and storage: 52 kWp – 26 kWh

Electricity consumption 39750 kWh

Planned electricity production 44.200 kWh



Gesamtverbrauch



Electricity price (Solar 2024):

28,00 Cent/KWh

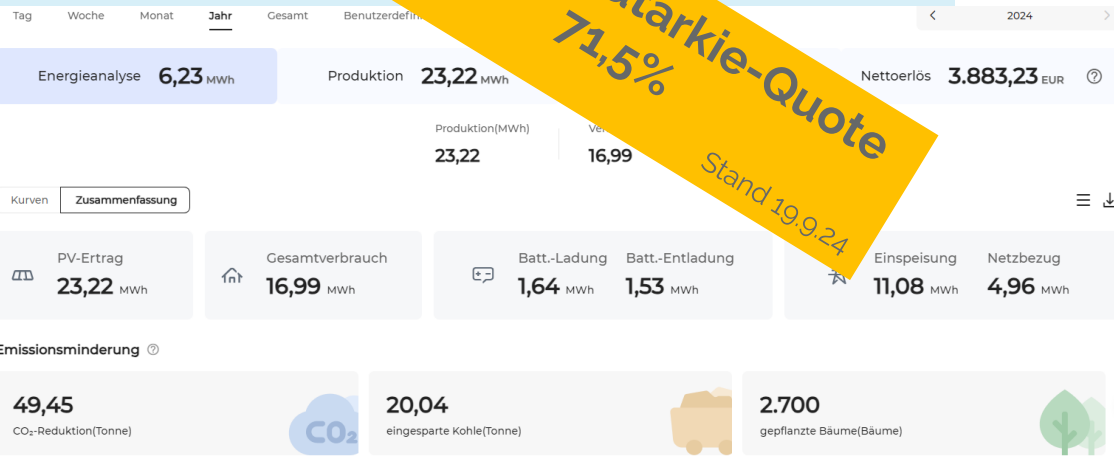




Project Church in Kiel



Aktuelle Autarkie-Quote
71,5%
Stand 19.9.24



Consumer:

Church community center, day care center, facility manager

Size of PV Installation and storage

24,75 kW/p – 5,1 kWh
(66 solar modules)

Electricity consumption

18.000 kWh

Planned electricity production

20.000 kWh

Electricity price (solar 2024):

27,50 Cent/kWh

Innovation in Hamburg

- 14 houses
 - 102 appartements
 - 17 electric house connections
- Neighborhood concept?
- Virtual vs. physical measurement concept?
- Energy sharing?



TENANT ELECTRICITY IS A JOINT EFFORT

OWNER

- Decision to use the roof for pv
- Signing contracts
- Option: Participate in the project financially

BEN eG

- Decision about profitability and technical feasibility
- Investment
- Project development and installation (with partners)
- Technical and economical operations
- Electricity supply
- Invoicing

RESIDENTS

(Tenants and owners)


- Change electricity supplier to BEN (supported by BEN)
- Option: buy shares of BEN eG

PROPERTY MANAGER

- Coordinate contract signing
- Support communication with owners and residents
- Enable BEN eG to access the building and the roof



 info@BENeg.de

 Tel.: 040 – 30 85 24 75

 www.beneg.de